



# PRODUCT OVERVIEW

# LEVEL MEASUREMENT

MAC Sensor Co.,LTD.  
Changsha City,Hunan,China  
<http://www.macsensor.com>  
TEL: +86-731-89975636 / 89975645

MAC Sensor Co.,LTD.

## L705 Sewage Pressure Level Transmitter



### Characters:

- ☆ Accuracy:  $\leq \pm 0.5\% \text{F.S}$
- ☆ Wide working temperature scope
- ☆ Advanced digital temperature compensation.
- ☆ Excellent resistance against impact, overload, Shock and erosion.
- ☆ Highly-efficient lightning absorption, strong RFI & EMI resistance
- ☆ Impact resistance and disturbance
- ☆ 1.5 times range standard overload
- ☆ 3 times range burst pressure
- ☆ CE approving

### Applications:

- ★ Sewage level measuring and control
- ★ Automatic testing system
- ★ well level measurement and control
- ★ Sea water level measurement and control
- ★ Industrial course testing and control
- ★ Laboratory equipment
- ★ Oil and Fuel Tank level measuring
- ★ Sewer water level and pressure monitor
- ★ Saving water to irrigate
- ★ Sewage pump station level measurement

### Profile

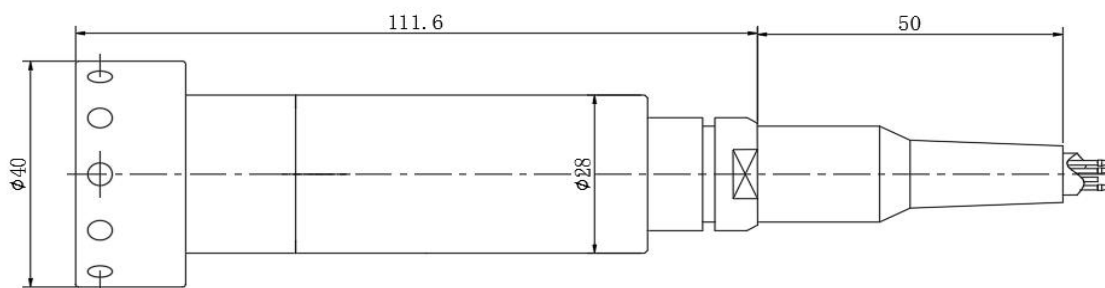
L705 is a fully sealed submersible level transducer/transmitter. It is made by building in high stable and reliable OEM piezo-resistive silicon pressure sensor and high accurate circuit board into the stainless steel housing. Integrated construction and standard signal provide the user easy and convenient application in the local working place. The special cable connects with housing, can be immersed into the media for a long time.

L705 level transducer/transmitter has compact size, good stability it can be used for sewage, water, liquid measure and control of sewage pump station, water well, liquid tank, medicine, metallurgy, electricity, mine, city water supply and drainage and hydrology, especially used in the field of sewage level and pressure measurement project.

Specifications

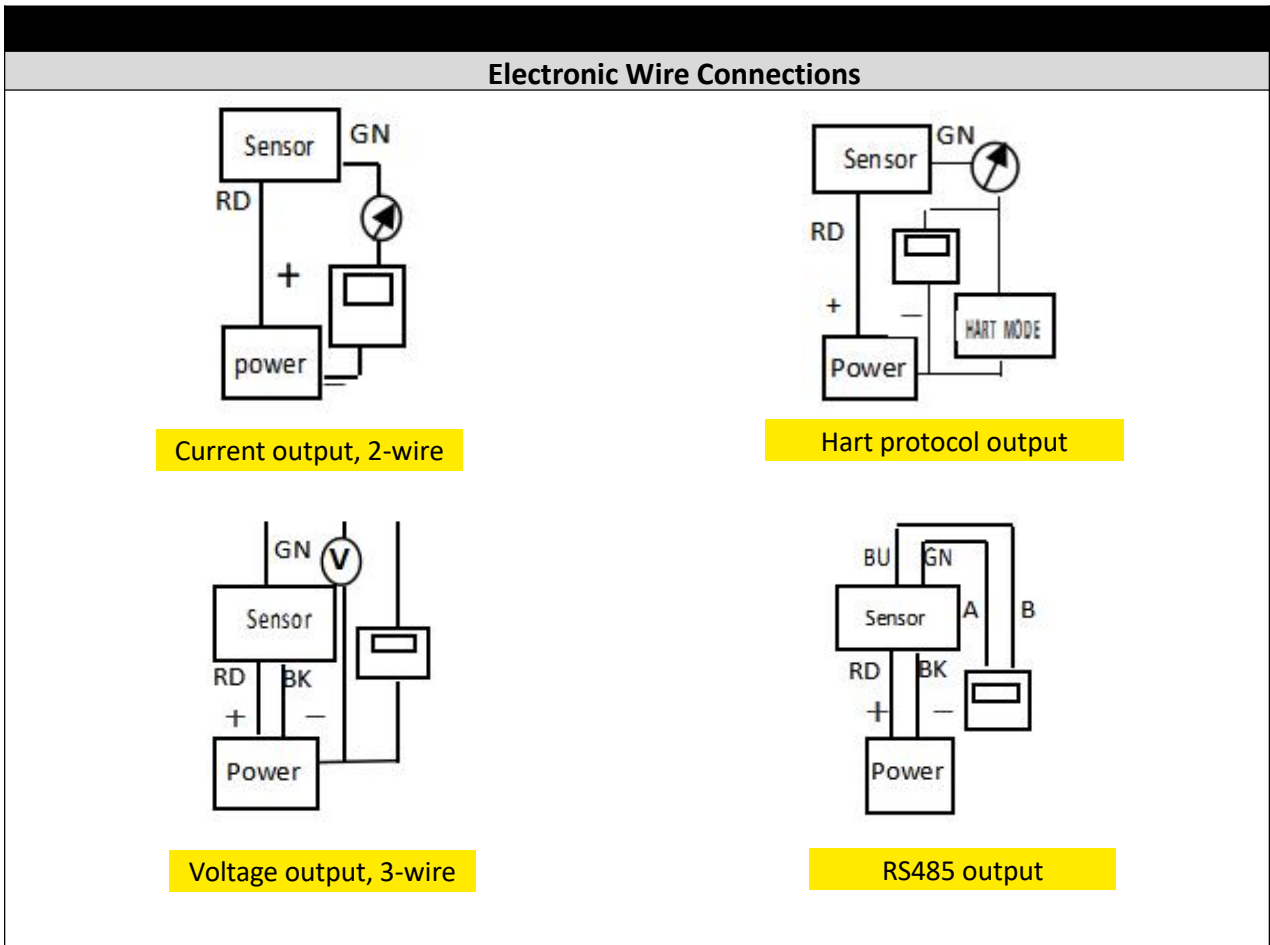
Model	L705					
Parameter						
Pressure Range	0-0.1 Bar.....20 Bar 0-1m.....200m H2O optional					
Overload	150% F.S					
Burst Pressure	500% F.S					
Accuracy	≤ ±0.5%F.S; ≤ ±0.25%F.S(By customized)					
Long-term Stability	≤ ±0.2%F.S. of span/year					
Working Temp.	-30°C to +70°C					
Storage Temp.	-40°C to +85°C					
Temperature Compensation	0°C to +50°C					
Medium compatible	Compatible with 316L Stainless Steel					
Electronic Wire	2-wire	3-wire			4-wire	
Output	4-20 mA	1-5 V;0-5 V; 0-10 V	0.5-4.5 V Radiometric	SDI-12	mV Signal	RS485 Modbus RTU
Power Supply	12-30V DC (7-30V DC optional)	12-30V DC	5V DC±5%	12V DC	5-10V DC	10-30V DC (3.3-12 V DC optional)
Insulate resistance	>100M Ω @50V					
Zero Temp. Drift	0.05%FS/°C (≤100kPa); 0.05%FS/°C (>100kPa)					
FS Temp. Drift	0.05%FS/°C (≤100kPa); 0.04%FS/°C (>100kPa)					
Electronic Connection	Fixed cable					
IP Rating	IP68					
Response time	≤10ms					
Pressure Type	Gauge pressure; Sealed gauge and absolute optional					
EMC Standard	EN 61326-1:2013; EN 61326-2-3:2013 EN 61000-6-2:2005; EN61000-6-4:2007+A1					

Dimension and Drawing



Unit,mm

ELECTRONIC CONNECTIONS



**V. Part Number Code Table For Level Range:**

000		016	0-1.5	032	0-10	048	0-125
001		017	0-1.6	033	0-12	049	0-150
002		018	0-1.7	034	0-15	050	0-200
003		019	0-1.8	035	0-16		
004		020	0-1.9	036	0-20		
005		021	0-2.0	037	0-25		
006		022	0-2.1	038	0-30		
007		023	0-2.2	039	0-35		
008		024	0-2.3	040	0-40		
009		025	0-2.5	041	0-50		
010		026	0-3	042	0-60		
011	0-0.5	027	0-4	043	0-65		
012	0-1.0	028	0-5	044	0-70		
013	0-1.1	029	0-6	045	0-80		
014	0-1.2	030	0-7	046	0-90		
015	0-1.3	031	0-8	047	0-100	X	Customized

## VI. Order Information

P/N	L705 (Model)	3	S10	A	014	H	0	5	G
Selection									
Signal Output	5=4-20mA 5=0-10V 8=0.5-4.5V 16=SDI-12	4=0-5V 6=1-5V 9=RS485 Modbus X=By customized							
Output	S10=12-30V DC S6=5V DC S63=5-10V DC S64=3.3-12V DC	S11=7-30 V DC S5=12V DC S17=10-30V DC X=By customized							
Process Connection	A=∅ 40 mm thread with cover								
Level Measurement	See last page Level Range Code Table and select your requested range code adhere here								
Pressure Unit	H=m H <sub>2</sub> O	B=Bar	P=Psi	F=m Fuel					
Accuracy	0=0.5%F.S 1=0.25%F.S								
Cable length	1=Cable 1M 2=Cable 2M 3=Cable 3M 4=Cable 4M 5=Cable 5M 6=Cable 6M XXX=Cable xxxM								
Pressure Type	G=Gage S=Sealed A=Absolute								